

Equip your drug screening program with a **convenient** and **reliable** testing tool.



## FEATURES/BENEFITS

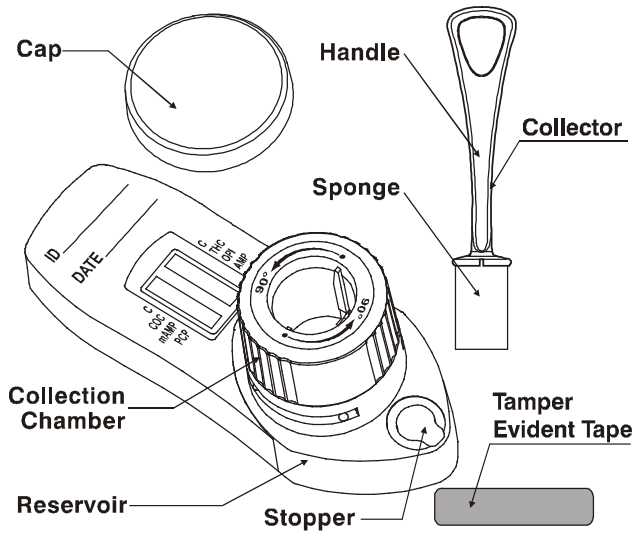
- Improved Sensitivity of Parent THC
- Results in under 10 minutes
- Detects up to Six Drugs
- Zero Exposure Collector
- Split Specimen Well
- Simple Procedure

## AVAILABLE TEST PANELS

**6 Panel** — AMP, M-AMP, BZO, COC, THC, OPI (P/N: 2083)

**6 Panel** — AMP, M-AMP, COC, THC, OPI, PCP (P/N: 1960)

## ORALERT COMPONENTS



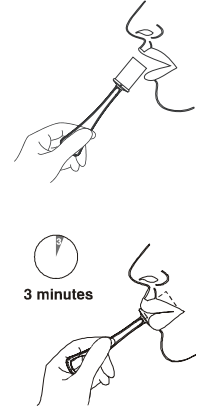
## ORALERT TESTING PROCEDURE

**1** Instruct the donor not to place anything in the mouth including food, drink, gum or tobacco products for at least 10 minutes prior to collection.

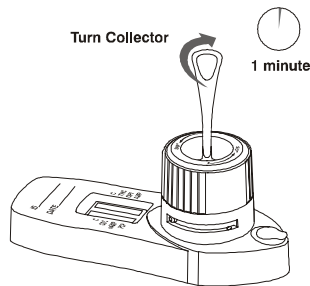
**2** Insert sponge end of collector into mouth.

Actively swab the inside of the mouth and tongue with sponge. As soon as the sponge softens slightly, gently press the sponge between the tongue and teeth to endure complete saturation.

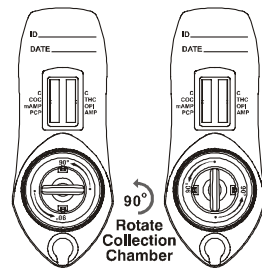
The sponge is saturated when no hard spots can be detected. Collect for a total of 3 minutes before removing sponge.



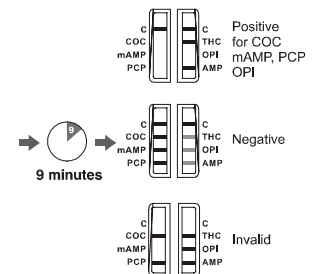
**3** Insert collector into device as shown. Push collector down into chamber. Turn collector clockwise to lock into chamber. Wait 1 minute.



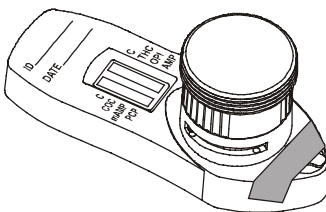
**4** Rotate collection chamber 90° counterclockwise.



**5** Wait 9 minutes and read results.



**6** If results are positive, remove collector from device and secure reservoir with tamper evident tape. Secure cap onto collection chamber. Send device to laboratory for confirmation. Laboratory can access reservoir through stopper.



\*NOTE: ANY POSITIVE RESULT OBTAINED WITH THIS SALIVA SCREENING TEST IS PRESUMPTIVE AND SHOULD BE CONFIRMED BY AN ALTERNATE METHOD SUCH AS GC/MS. CONTACT OUR LAB FOR ADDITIONAL GC/MS CONFIRMATION SERVICES.

For forensic use only.

\*Marijuana (THC), Benzodiazepines, Cocaine, Opiates (300), Phencyclidine, Methamphetamines, Amphetamines

Call today: **877-444-0049**