

The iScreen™ iCup® is the **all inclusive on-site** device for all of your urine drug screening needs.



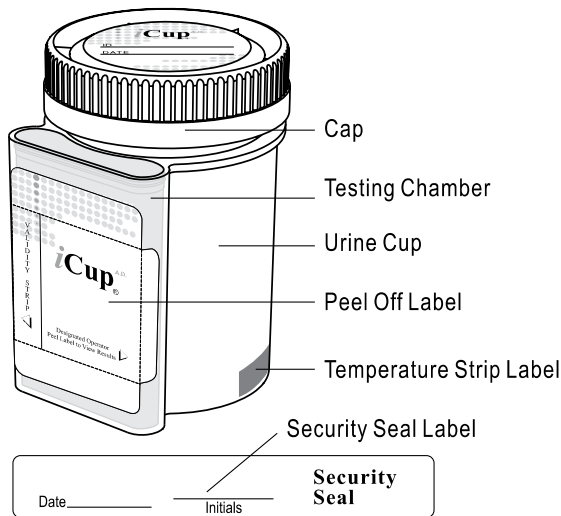
#### FEATURES/BENEFITS

- Self contained cup minimizes collector exposure to urine
- Easy to use device
- Results in 2 - 5 minutes
- Screens up to 15 different drugs with optional adulteration strips.
- FDA 510k cleared to market

#### 15 AVAILABLE DRUGS TO SCREEN

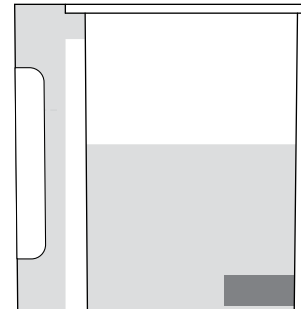
\*AMP, BAR, BUP, BZO, COC, MDMA, THC, MTD, M-AMP, MOP, OPI, OXY, PCP, PPX and TCA

**iSCREEN iCUP COMPONENTS**

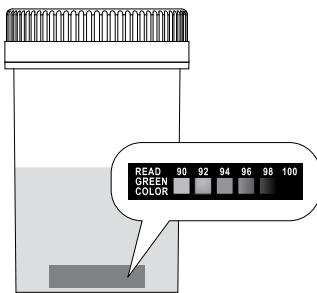


**iSCREEN iCUP TESTING PROCEDURE**

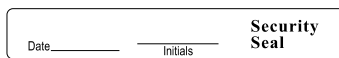
**1** Donor provides specimen and replaces lid.



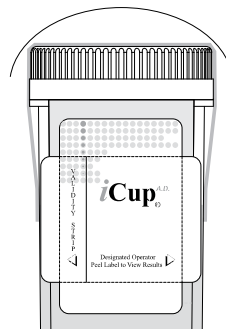
**2** Temperature is read between 2-4 minutes to verify range between 90-100°F.



**3** Check cap for tight seal. Donor dates and initials the security seal and places security seal over cap.



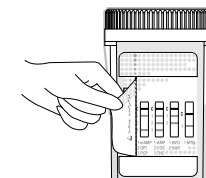
Place security seal over cup



**4** Technician peels off label to reveal drug test strips.



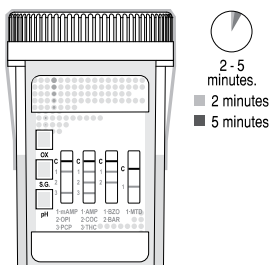
Technician peels off label to reveal adulteration strip(s), if applicable.



Note: The order can be reversed.

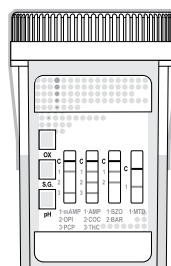
**5** Read adulteration test results between 2 - 5 minutes, if applicable.

This illustration is an example of a 9 drug cup. Other configurations available but not shown.

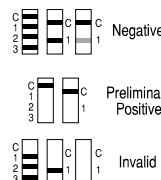


Adulteration Strip  
See color chart and package insert for interpretation.

**6** Read drug test results at 5 minutes.\*\*



■ 5 minutes. ■ 60 minutes.  
Read the drug strip results at 5 minutes.  
Test results stable up to 60 minutes.



\*\*NOTE: ANY POSITIVE RESULT OBTAINED WITH THIS URINE SCREENING TEST IS PRESUMPTIVE AND SHOULD BE CONFIRMED BY AN ALTERNATE METHOD SUCH AS GC/MS. CONTACT OUR LAB FOR ADDITIONAL GC/MS CONFIRMATION SERVICES.

For professional in vitro diagnostic use only.

\*Amphetamine, Barbiturates, Buprenorphine, Benzodiazepines, Cocaine, MDMA (Ecstasy), Marijuana, Methadone, Methamphetamine, Morphine, Opiates, Oxycodone, Phencyclidine, Propoxyphene, Tricyclic Antidepressants

Call today:  
**877-444-0049**