

# reditest®

SUBSTANCE ABUSE SCREENING DEVICES



## Are they on drugs? We'll find out.

Reditest® on-site urine and oral fluid drug testing devices from the name you can count on—  
Redwood Toxicology Laboratory.

Confidence in testing.

### REDITEST® SUBSTANCE ABUSE SCREENING DEVICES

Redwood Toxicology Laboratory, Inc. (RTL) sells millions of instant urine and oral fluid drugs of abuse screening devices each year. With our Reditest® on-site screening devices, you get more than the highest quality, most cost-effective devices in the industry, you get reliability.

The Reditest screening devices, in combination with RTL's lab services, provide our clients with a comprehensive and convenient drug testing solution. Reditest screening devices are ideal for a variety of testing environments. Turn to RTL for confidence in testing—we'll find out.

### BENEFITS INCLUDE:

- Multiple drugs and configurations available
- Toll-free customer support services with access to board certified toxicologists
- Collection and confirmation kits available
- Affordable pricing (ask about GC/MS confirmations)

### PRODUCT LINE:

**Reditest® RediCup®**—all inclusive urine collection and test  
Available tests include: \*AMP, M-AMP, BAR, BZO, COC, MDMA, MTD, OPI, OXY, PCP, TCA and THC

**Reditest® Panel-Dip**—accurate dip test for multiple drugs in urine  
Available tests include: \*AMP, M-AMP, BAR, BZO, COC, MDMA, MTD, OPI, OXY, PCP, TCA and THC

**Reditest® On-site Oral**—reliable and unobtrusive saliva test  
Drugs detected: \*AMP, M-AMP, THC, COC, OPI, PCP

**iScreen™ OFD**—saliva drug detection, anywhere anytime  
Available tests include: \*AMP, M-AMP, COC, OPI, PCP, THC.

**OrAlert**—saliva drug detection, with BZO & improved THC sensitivity  
Available tests include: \*AMP, M-AMP, BZO, COC, OPI, PCP, THC.

**Reditest® 6 Cassette**—CLIA waived and ideal for clinical use  
Drugs detected: \*AMP, COC, THC, M-AMP, OPI and PCP


**Reditest® Alcohol-Saliva**—rapidly detect ethyl alcohol in saliva  
\*Semi-quantitative interpretations at 0.0%, 0.02%, 0.08% and 0.30% SAC.

**Reditest® Alcohol-Breath**—self contained, non intrusive test  
Available in .02 gm/dL cut-off level.

**Reditest® Smoke Cassette**—urine screen for smoking status  
Cotinine (nicotine metabolite) in urine at 200 ng/mL.

\* Alcohol (SAC), Amphetamine (AMP), Barbiturates (BAR), Benzodiazepines (BZO), Buprenorphine (BUP), Cocaine Metabolite (COC), Cotinine (COT), Marijuana (THC), Ecstasy (MDMA), Methadone (MTD), Opiates—300 or 2,000 ng/mL cut-off (OPI), Oxycodone (OXY), Phencyclidine (PCP), and Tricyclic Antidepressants (TCA).



an  inverness medical company

Call Now: **800-255-2159**

or visit: [www.redwoodtoxicology.com/0309](http://www.redwoodtoxicology.com/0309)

**FREQUENTLY ASKED QUESTIONS**

Complete list of FAQs available online at [www.redwoodtoxicology.com](http://www.redwoodtoxicology.com)

**What devices do you offer?**

Redwood Toxicology Laboratory provides an extensive selection of on-site screening devices for urine and saliva. In addition to our popular Reditest® RediCup® device, we offer the Reditest® Panel-Dip for urine testing. Both are affordable options for your agency. Gender neutral, saliva testing devices include the Reditest® On-Site Oral, iScreen™ OFD, and OrAlert for drugs of abuse detection, and the Reditest® Alcohol-Saliva device for the alcohol detection. Other specialty tests include the Reditest® Smoke Cassette, Buprenorphine Cassette, CLIA-Waived Reditest® 6 Cassette and the Adulteration Strips. Call us toll-free to place your order (800) 255-2159.

**What training and support services does RTL provide?**

RTL provides many support services to make your drug testing program a success. This includes telephonic training, toll-free access to Client Services staff members and laboratory GC/MS confirmation. Our toll-free number is (800) 255-2159.

**Do the results hold up in court?**

The Reditest on-site devices provide preliminary analytical test results. Industry standards require that a more specific analytical method be used in order to obtain a confirmed analytical result. RTL offers gas chromatography/mass spectrometry (GC/MS) confirmation services at its state of the art laboratory.

**Reditest® RediCup® Procedure**

\* See product insert for complete instructions, limitations, and warnings.

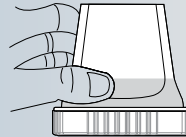
Collect urine sample in RediCup®.

Screw cap onto cup, ensure cap is tightly secured.

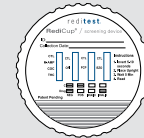


Turn cup upside-down, on flat surface, for approximately 30 seconds.

After 30 seconds, flip upright and wait for results to appear.



Read results in 5 minutes.



C Drug NEG POS

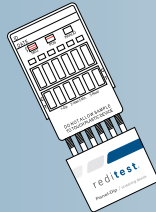
C Drug INVALID INVALID

**Reditest® Panel-Dip Procedure**

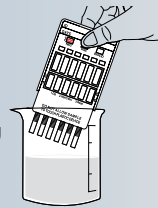
\* See product insert for complete instructions, limitations, and warnings.

Collect urine sample in clean container.

Remove plastic cap from bottom of device.



Dip revealed pads into urine sample for a minimum of 15-30 seconds until urine is seen wicking into reading zone.



Replace cap on device. Lay flat.

Read results in 5 minutes.



C Drug NEG POS

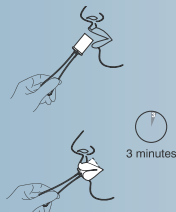
C Drug INVALID INVALID

**Reditest® On-Site Oral Procedure**

\* See product insert for complete instructions, limitations, and warnings.

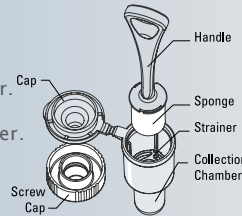
Insert the sponge collection device into the donor's mouth.

Actively swab mouth for 3 minutes.

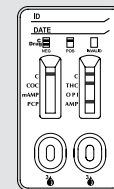


Open collection chamber and place the saturated collector into chamber. Press the sponge fully against strainer.

Discard collector and snap cap shut.



Add 3 drops of oral fluid into each sample well. Read results in 10 minutes.



C Positive for COC mAMP PCP GPI

C Negative

C Invalid (No control line)

**Reditest® Alcohol - Saliva Procedure**

\* See product insert for complete instructions, limitations, and warnings.

Tear open the foil pouch and remove the test strip.

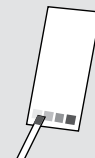


Saturate the reactive pad on the end of the stick with saliva in the mouth or a cup for 10 seconds.

Remove stick from mouth or cup.



After exactly 2 minutes, match the color on the pad to color chart.



redicup® // panel-dip // on-site oral // iscreen ofd // oralert // 6 cassette // alcohol-saliva // alcohol-breath // smoke cassette



**800-255-2159**

Screening Devices: 877-444-0049 // Laboratory: 800-255-2159 // Fax: 707-577-8102  
3650 Westwind Blvd., Santa Rosa, CA 95403 // [www.redwoodtoxicology.com](http://www.redwoodtoxicology.com)

RediCup®, Panel-Dip, and 6 Cassette devices are for professional in vitro diagnostic use only. On-Site Oral, Alcohol-Saliva Strips, iScreen™ OFD, OrAlert, and Alcohol-Breath Test are for forensic use only. Reditest® Smoke Cassette is for determination of smoking status only. The assays provide only a preliminary test result. Any positive result obtained with these drug screens are presumptive and should be confirmed by an alternate method such as GC/MS.